



**Lot 1. LAR20-005.** An attractive dark coated quality bull to start the sale. A bull we have used in the stud & is the perfect type of bull to open heifers & to add value in replacement females from first calvers. Lot 1 has a proven, tried & tested genetic background with a combination of top genetics. His sire is **LAR16-453** (Lot 6 in 2020 bought by Boeram Venter & is the brother, same dam, to prolific herd sire **LAR12-026** also Boeram Venter) Lot 1's sire's dam, **LAR09-231** is an exceptional 5 star, Elite Gold cow and still in the herd at 14 years and just weaned her 11<sup>th</sup> calf. She has 100% pass rate for all her calves on their various performance tests and inspections. **LAR16-453**, with 7 sons on sale, bred notable traits with very good masculine heads, dark quality coats, good top lines & exceptional width. Lot 1 is no exception. Lot 1's dam, **LAR13-236** (who unfortunately succumbed to theft) was a beautiful correct cow, a daughter of **LAR09-349** (son of **LAR04-287**, see Lot 8) who had exceptional width, muscling with a strong masculine head. Lot 1's grand dam **LAR04-046** (104/8 calves, ICP 375) was the most beautiful & productive **AG98-338** daughter out of a truly remarkable iconic old cow **LAR02-030**, 104/11, ICP 387 (who is in most top bulls & females pedigrees who had 6 daughters in the herd) These herd sires with a combination of historic genetic value can add immense value in the all important heifer replacement. A safe bull to use with an exceptionally well connected genetic pool and stable selection values. We retain a semen share in this bull.



Calving Ease Value 114	Weaner Calf Value 105	Fertility Value 103	Cow Value 107	Growth Value 108	Birth Mass 30kg Wean Mass 236kg Height - Length - L/H Ratio -
---------------------------	--------------------------	------------------------	------------------	---------------------	--



**Lot 2. LAR20-054.** A very neat and correct son of **LAR16-470**. This herd sire, a son of the impressive **BG12-043** was used to open heifers and has 6 sons on sale out of first calvers. Lot 2's dam **LAR17-049** (102/3 and in the herd) is a highly productive cow, a lot of milk and growth, breeds heavy weaners, who comes from the **LAR06-224** line which compliments the **LAR16-470** line. Lot 2 is a bull with a good masculine head and strong muzzle, very broad well muscled bull who doesn't carry the DM gene, a strong top line and with traits of a tough hardy bull with adaptability under any conditions. Adaptability is one of the all important factors under today's pressures of economic value in beef breeding. A bull must withstand and perform under all harsh conditions to be of value in the beef production chain. Lot 2, a bull with a light birth mass of 31kg, excellent calf growth, Calf Growth Value 131 and heavy on wean, 285kg actual, Wean Direct 120 index, Growth Value 131. Lot 2, a D phase score of 8 did exceptionally well on D phase ADG 128, FCR 114 and with a Post Wean of 123. Phenotypically and genetically a bull who should adapt to any environment and add value.



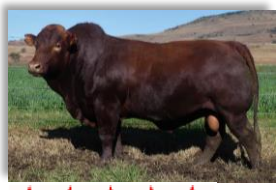
Calving Ease Value 92	Weaner Calf Value 116	Fertility Value 100	Cow Value 108	Growth Value 131	Birth Mass 31kg Wean Mass 249kg Length 1470 Height 1210 L/H Ratio 1.21
--------------------------	--------------------------	------------------------	------------------	---------------------	---



**Lot 3. LAR20-275.** A 5 star son of **LAR17-358** with exceptional genetic value. (**LAR17-358**, Lot 8 in 2022 bought by Andre van der Heyde. Brother to **LAR14-173**) **LAR17-358** was used very extensively in the herd for 3 seasons where he successfully opened heifers and was used on mature cows. One of the most well used herd sires at Up George with 102 progeny, average birth mass of 30kgs and an average wean index of 102 and 18 month index for heifers of 102. His bull calves excelled on D Phase as top performers. **LAR17-358** has bred exceptional well adapted females and the top priced heifer at the 2023 National sale was sired by him. His impressive progeny, with a light birth mass and exceptional calf growth, continue to grow and excel on any performance test, producing the top performers with a high retention and high conformation scores. He breeds the right type, with volume, length and width and are short on the leg with the desired heavy body mass. Well adapted animals with performance. Lot 3 has a very well connect pedigree out of a string of top class dams. His dam **LAR08-115**, (107/10 calves, 384 ICP) a magnificent Elite Gold 5 star cow, an embryo cow with Baszohn Bonsmaras. The grand dam and great grand dam were both top cows with milk, fertility and longevity, **LAR04-130** (103/12, ICP 370) and **LAR92-101** (105/13 calves). Lot 3 is recommended for heifers, and can be utilized in a maternal breeding program with confidence. A semen share in this bull is retained.



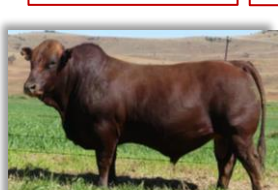
Calving Ease Value 119	Weaner Calf Value 120	Fertility Value 127	Cow Value 132	Growth Value 98	Birth Mass 30kg Wean Mass 234kg Length 1350 Height 1110 L/H Ratio 1.22
---------------------------	--------------------------	------------------------	------------------	--------------------	---



**Lot 4. LAR20-257.** This is a very attractive son of **LAR17-339**. (A top herd sire bought by Eloff and Stephan Muller in 2021, Tambaraine Bonsmaras) **LAR17-339** has bred exceptionally well, both beautiful females, feminine and with capacity and volume with beautiful heads, as well as bulls. Very seldom do you get a sire who breeds just as good females as bulls. The sons of **LAR17-339** will make a pronounced difference in the efforts to increase beefing qualities in any beef herd in SA. They have quality coats, incredible volume, width, length & very good broad heads. **LAR17-339** stamps the beefing qualities on all his progeny. One notable and important trait is that they have adaptability under harsh conditions and keep their condition well. This is an exceptional trait, especially for cattle to pack on the weight & sustain that conformation & weight through extreme conditions. **LAR17-339** has had 87 progeny in the herd, & a very high retention rate. His progeny have high conformation scores & are productive with excellent performance in any given test with an 88% pass rate on both females and bulls. Lot 4 is a perfect example of these traits. He is the right size and the right type for all SA conditions. Lot 4 a heavy bull, short on the leg, a heavy weaner, wean direct 145, with excellent post wean and growth 137 value, and an exceptional carcass value of 143. Lot 4's dam **LAR15-448**, a cow with good milk and always breeds a top weaner with a full brother to Lot 4 with a high conformation score of 8.5.



Calving Ease Value 76	Weaner Calf Value 137	Fertility Value 111	Cow Value 126	Growth Value 137	Birth Mass 38kg Wean Mass 248kg Length 1370 Height 1140 L/H Ratio 1.20
--------------------------	--------------------------	------------------------	------------------	---------------------	---



**Lot 5. LAR20-389.** A good looking masculine, easy fleshing type of bull with a good head, broad over the shoulder & back. Lot 5's sire **LAR17-369** is a son of **LAR14-173**, with 8 sons on sale. This sire **LAR17-369**, a very fleshy type of bull with capacity & length, is out of a **LAR08-050** daughter, **LAR12-181** (104/6 calves) who is now with Sebadja Bonsmaras. Lot 5 has a fantastic proven dam line. The grandmother is **LAR08-156** (111/4) an embryo donor at Baszohn Bonsmaras in Mooi Rivier at 15 years old. She is the perfect type of **LAR06-224** daughter with the capacity, volume, width & length we all strive to breed. She is the daughter of the stalwart cow **LAR04-350** (104/12 calves) who is with Rubin Essakow at 19 years old. Genetics will always remain of equal importance to herd selections, nutrition & animal health in the ever demanding environment for improved economic beef cattle. A good all round bull with a strong pedigree behind him, as well as sound EBVs.



Calving Ease Value 83	Weaner Calf Value 120	Fertility Value 101	Cow Value 108	Growth Value 114	Birth Mass 37kg Wean Mass 238kg Length 1320 Height 1090 L/H Ratio 1.21
--------------------------	--------------------------	------------------------	------------------	---------------------	---



**Lot 6. LAR20-284.** An impressive 4.5 star son of the proven herd sire **LAR17-339**. (Bought by Eloff and Stephen Muller, Tambaraine Bonsmaras) see Lot 4. This herd sire LAR17-339 has bred exceptionally and consistently well. His 2020 crop of bull calves on D phase were very impressive with a 100% pass rate. His heifers on 18 month test also had a 100% pass rate on performance and conformation. This bull Lot 6, carries very similar qualities of his sire with his incredible capacity, depth, width and beautiful masculine head. His dark shiny coat adds to all these positive characteristics. He is short on the leg with all these positive attributes, well muscled, well fleshed and doesn't carry the DM gene. We find these high performing bulls with this type of conformation an exceptional attribute to beef economics as they grow in length and volume as opposed to height. The ideal type of bull we strive to breed. The



Bull's pedigree is one of the most valuable tools in herd sire selections. Lot 6 has an incredible and proven combination of 3 established Bonsmara herds with "old " proven pedigrees. Lot 6's sire, **LAR17-339** stemming from the old founder Up George cow **LAR05-151** in combination with **LAR06-224** and **AG98-338** two generations back. Lot 6's dam, **LAR15-061** (110/5 calves, ICP 386 and all 5 calves scoring 8 and higher) a daughter of the prominent herd sire **BG04-088** who did exceptionally well in the Up George herd producing 2 influential herd sires in the breed **LAR07-055** and **LAR07-090**. The combination of these iconic Bonsmara SA genetics have proved to be invaluable with a bull of such quality as Lot 6. A bull with exceptional selection values on wean, milk, fertility and growth, a heavy mature weight index and low on height. The ideal selection values complementing this bull's perfect phenotype. We retain a semen share in this bull.

Calving Ease Value 83	Weaner Calf Value 134	Fertility Value 104	Cow Value 121	Growth Value 125	Birth Mass 34kg Wean Mass 247kg Length 1360 Height 1120 L/H Ratio 1.21
--------------------------	--------------------------	------------------------	------------------	---------------------	---



**Lot 7. LAR20-297.** This grandson of **LAR14-173** is a 5 star, 8 point score bull with exceptional qualities. Well fleshed, with exceptional length, strong top line and a well established genetic combination with his sire **LAR17-369** (son of **LAR14-173** and 8 sons on sale) and an incredible dam line with milk, fertility and longevity. Lot 7's grand mother **LAR11-087** (112/7 calves, ICP 376) is a daughter of the sire **LAR08-50** who's well renowned for breeding excellent productive females. This incredible Elite Gold cow is now with Pieter Herbst, Umvozana Bonsmaras and had 2 calves in one year in 2021. One in January and one in December! Quite a feat for such a high producing 11 year old cow. Her dam **LAR00-231**, was also a high producing fertile cow 112/11 calves. This Lot 7 should breed outstanding



replacement daughters (cow value 128) as well as heavy profitable weaners (weaner calf value 134) for functional efficiency in feedlot conditions (ADG 126). These are all profitable traits which include adaptability, fertility and longevity. Lot 7 has an incredible length/ height ratio of 1:25, excellent on fertility, 111 index with large well formed testes measuring 44cm. A well balanced bull suitable for all breeding programs in the beef industry.

Calving Ease Value 95	Weaner Calf Value 134	Fertility Value 112	Cow Value 128	Growth Value 135	Birth Mass 33kg Wean Mass 259kg Length 1390 Height 1110 L/H Ratio 1.25
--------------------------	--------------------------	------------------------	------------------	---------------------	---



**Lot 8. LAR19-373.** This bull certainly takes the meaning of "special" to the next level. He is truly extraordinary and a real privilege for all Bonsmara enthusiasts to admire. He is the closest we at Up George will ever get to breeding the most ideal and perfect bull. Phenotypically he has everything – everything a stockman aspires to breed and more. Lot 8 is a true lesson in the importance of visual appraisal. A proven herd sire who is difficult to fault, well balanced with his easy fleshing and prevalent muscling and does not carry the double muscled gene. A notable characteristic of his progeny and genetic traits is that he transfer these inherent muscling traits to his progeny without carrying the mutated Myostatin double muscling gene. This is a very favourable trait in the ever evolving science of cattle breeding



to breed well muscled cattle without the inherent double muscled gene. Lot 8 carries an astonishing amount of weight in his length, (length/ height ratio of 1:27), width and general capacity, but is short on the cannon bone, has an incredibly strong top line, full behind the shoulder and fleshes well into the hump with a broad back, and an incredible length of eye muscle. A better head one will not find, with his exceptional strong broad muzzle, width between the eyes and eye bank. He has character, houding, is very athletic and plenty libido. Lot 8 has a perfect clean sheath with large well formed straight testes measuring 46cm with high quality semen which has a direct impact on inherent fertility which will improve the reproductive performance of his progeny. Genetics and pedigree are of equal importance as is the phenotype in cattle selection. Lot 8's dam **LAR08-245** (103/10 calves, 11<sup>th</sup> calf at foot) is an incredible stalwart cow, still highly productive in the herd at 15 years old. She is the daughter of the highly sort after old proficient genetics, **LAR04-287** who bred top cows in the herd with adaptability, milk, fertility and longevity. **LAR08-245's** daughter, **LAR11-039** (sister to Lot 8, **LAR19-373**) is the dam of legendary herd sire **LAR14-064**, bought by Fourie Scheepers and Nick Serfontein in 2017 and later sold to Sebadja Bonsmaras as a 7 year old bull who is still proving his worth as an old proven herd sire. These proven genetics are invaluable in determining how the value chain of cattle breeding flourishes and succeeds. The art of understanding an animal's pedigree is extremely valuable. A true master of the art is Leon Riekert, LFR Bonsmara Stud, who bred the sire of Lot 8, **LFR15-032**. He was bought as a young 2 year old bull in 2017 and flourished as a influential herd sire at Up George bringing in desirable Bosveld traits as a result of the vigilant and proficient pairings and masterminding of genetic trait combinations. **LFR15-032** was a true testament of these well thought out combinations which linked perfectly in the Up George herd producing 20 top bulls on the Up George production sales as well as 3 herd sires. **LFR15-032** is now with Pieter Herbst, Umvozana Bonsmaras in Greytown. Lot 8 will be a true attribute to the beef industry in SA. We retain a semen share in this bull and 2 Co-ownerships have already been taken. The bull has been successfully tapped and he sells with 7 shares.

Calving Ease Value 90	Weaner Calf Value 108	Fertility Value 115	Cow Value 112	Growth Value 116	Birth Mass 36kg Wean Mass 252kg Length 1380 Height 1090 L/H Ratio 1.27
--------------------------	--------------------------	------------------------	------------------	---------------------	---



**Lot 9. LAR20-502.** A well balanced and broad 4 star son of **LAR18-018** (**LAR14-173** son) who was bought by Leon Riekert and Andries Kruger in 2021. This prepotent herd sire has bred cattle with volume and capacity like himself. With the sustainable genetic background of this calibre, with his sire **LAR14-173** and his dam a beautiful **LAR06-224** daughter, **LAR11-040** (108/4) the predictability of the bull breeding volume and capacity is a given. This is evident in his 7 sons on sale. Lot 9 with his exceptional Weaner Calf value of 128, wean direct index of 128, Post Wean index of 146 and an excellent carcass value of 136. These are all profitable and fundamental traits of adaptability and functional efficiency which need to be considered in selection of bulls for the economical production of beef and high yielding carcasses. Lot 9, a bull who can efficiently contribute to these criteria in any breeding program.



Calving Ease Value 74	Weaner Calf Value 128	Fertility Value 100	Cow Value 113	Growth Value 138	Birth Mass 38kg Wean Mass 236kg Length 1360 Height 1130 L/H Ratio 1.20
--------------------------	--------------------------	------------------------	------------------	---------------------	---



**Lot 10. LAR18-422.** This 4.5 star, 9 score bull is one of the most sentimental bull's ever bred at Up George. He is the last son of the legendary bull **LAR14-173 (Maestro)** to be sold at Up George and we have certainly kept the best for last! His dam **LAR05-151**, an 18 year old iconic Elite 4 star cow is still in the herd pregnant again with her 14th calf, as well as being an embryo donor. This superb cow has 2 sons on sale this year, Lot 10 and Lot 18, both been used in the herd. **LAR05-151** (104/13 calves) is also the dam of the well know and successful herd sire **LAR09-281** and the dam of the Elite Gold cow **LAR08-168** who is the dam of herd sire **LAR17-339** (Tambaraine Bonsmaras) with 12 sons on sale.



Lot 10 carries numerous qualities of his dam with his exceptional length, dark quality coat and remarkable temperament. A heavy bull, short on the leg with big correct, well formed testes, a neat sheath and long tail. A very fertile bull with libido and exceptional quality semen. A very attractive masculine bull who is difficult to fault. An interesting fact learnt from Paraguayan beef ranchers is that they select for a fleshy well developed dewlap for efficient heat control in the hot summer months as Lot 10 has. Lot 10 a prepotent sire with likeable progeny who carry his striking traits, dark pigment, strong toplines and the desirable capacity. His average birth mass for 20 calves in his first season is 34kgs. Lot 10's sons on D phase have the top average ADG index of 108 and his female progeny an average 18 month index of 105. These adaptability traits in a harsh mountainous climate are reflected in the sires incredible Post Wean value of 142 and the ADG growth value of 126. He breeds true to type phenotypically and genomically. Genetics and pedigree are extremely valuable when selecting herd sires. Lot 10 is a culmination of one of the best sires and cows ever bred at Up George. This is a very sentimental phenomena and all we can wish for as passionate cattlemen is that **LAR18-422** will endure a long and successful road in the Bonsmara industry. We retain a semen share and 3 co-ownerships have already been taken. He sells with 6 available shares.

Calving Ease Value 83	Weaner Calf Value 128	Fertility Value 117	Cow Value 120	Growth Value 136	Birth Mass 33kg Wean Mass 246kg Length 1340 Height 1090 L/H Ratio 1.23
--------------------------	--------------------------	------------------------	------------------	---------------------	---



**Lot 12. LAR20-104.** This striking 4.5 star son of **LAR18-041 (LAR14-173 son)** was used as a year old bull to open heifers as well as used on mature cows. His average birth mass for his calves is 31kgs. He was the top performer on D phase, 137 index and one of the best phenotypically in his group with a 9 score. This bull has remarkable length, with a strong top line, tight sheath & big well formed testes, 42 cm with quality semen. The remarkable characteristic of this bull is that with his exceptional selection & predicted values for growth of 148, Post Wean 132 & Weaner calf value of 125, he remains the right type, heavy in physique carrying his weight in his length & width. This is the type we strive to breed who excel under all conditions & continue to perform with functional efficiency & adaptability. These profit traits also include milk, fertility and longevity which are dominant in this bulls genetic configuration and not to



disregard the ever important turnover traits which include growth, muscle and marbling (carcass value 139). Understanding pedigrees and genetic combinations remain interesting and humbling! This combination of **LAR14-173** onto a **LAR14-200** daughter as in Lot 12, is remarkable. Lot 12's dam **LAR17-450** is a beautiful well balanced young fertile cow with excellent milk 105/3 calves with Lot 12 being her first calf. Lot 12's grand dam, **LAR12-401** a beautiful looking, Elite Gold, high producing cow 112/7 who is at Sebadja Bonsmaras. Lot 12 truly comes from a very good looking and highly efficient family on both sides. One co-ownership has been taken and we retain a semen share.

Calving Ease Value 92	Weaner Calf Value 125	Fertility Value 114	Cow Value 124	Growth Value 148	Birth Mass 35kg Wean Mass 254kg Length 1450 Height 1160 L/H Ratio 1.25
--------------------------	--------------------------	------------------------	------------------	---------------------	---



**Lot 14. LAR20-105.** This 5 star brother of Lot 12, same sire **LAR18-041** is a real looker! His sire **LAR18-041**, with 13 sons on sale has bred exceptionally well with beautiful feminine females and robust fleshy bulls as in Lot 12 and Lot 14. This herd sire **LAR18-041** (Lot 12 in 2021) was sold to Lawrence Allem and numerous co-owners. We used Lot 14 in a multiply sire group as a year old in a group of heifers. When selecting a bull to open heifers, we find there are multiple contributing factors which influence the criteria for this selection. The birth mass itself has several factors which influence the actual weight of the calf so we generally tend more towards the genetic selection of bulls to use on heifers, rather than only birth mass and the ease of calving EBVs. If the conformation of the heifer is suitable, broad in the pin bones, well grown with capacity, then a moderate phenotypically functional bull will be suitable for



the heifers without compromising on growth and conformation. Lot 14, a bull with exceptional conformation, very good masculine head and hump, he is wide awake with notable libido! His high producing and good looking dam line stem from the exceptional cow **LAR09-236** (100/10 calves) and is also the sister of **LAR14-173's** dam **LAR10-159**. An exceptionally well connect pedigree. **LAR09-236** was bought by Eloff Muller, Tambaraine Bonsmaras in 2021. Lot 14 with his exceptional growth figures and indexes is favourably short on the leg with remarkable length, 1:28 HL ratio, A heavy weaner, 265 kg for a first calver, and outstanding growth on D Phase test with a final weight of 490kgs. We retain a semen share in this bull.

Calving Ease Value 92	Weaner Calf Value 141	Fertility Value 110	Cow Value 131	Growth Value 140	Birth Mass 33kg Wean Mass 267kg Length 1450 Height 1130 L/H Ratio 1.28
--------------------------	--------------------------	------------------------	------------------	---------------------	---



**Lot 16. LAR19-319.** Another 5 star brother of the legendary bull **LAR14-173 (Maestro)** as well as **LAR17-358** (Lot 8 in 2022) out of the same exceptional dam **LAR10-159**. This cow is one of a kind producing such quality sons which have all been used in the herd. Lot 16 is a block of beef with unbelievable length and a strong back and top line. A very correct bull who carries himself well and can certainly add value in a maternal breeding program. His sire is the successful and well used bull **LAR14-106**, (bought by Jean Gouws and Andre vd Heyde in 2018 who is out of the most beautiful short thickset **LAR06-224** daughter, and she is the sister to the dam of **LAR07-55**.) The herd sire **LAR14-106** did exceptionally well in the herd bring in notable traits like strong toplines which attach well into a good well developed hump with outstanding width over the shoulder and hind quarter. Lot 16 is a replica of his sire in this regard. We have used this



bull Lot 16 in the stud herd on heifers and cows with the intention of breeding excellent replacement females. Something which should never be overlooked in the endeavour to breed top masculine bulls. He has very promising calves with the inherent top line, width and volume. Lot 16, with his exceptional Cow Value,(132) excellent on Weaner Calf production (132) and growth, who is clean of the DM gene will add value maternally as well as in any beef producing enterprise. One co-ownership has already been taken and we retain a semen share in the bull. He sells with 8 shares available.

Calving Ease Value 111	Weaner Calf Value 131	Fertility Value 118	Cow Value 132	Growth Value 123	Birth Mass 35kg Wean Mass 256kg Length 1410 Height 1140 L/H Ratio 1,24
---------------------------	--------------------------	------------------------	------------------	---------------------	---

**Lot 18. LAR19-342.** It's an interesting phenomenon with genetics and the sustainability and predictability of maternal cows who time and again produce top quality bulls and females which are always in the top 10 % of the herd. **LAR05-151** the dam of Lot 18, **LAR19-342**, is no exception to this. She is also the dam of Lot 10, **LAR18-422** and has produced 3 exceptional herd sires including **LAR09-281** as well. This cow **LAR05-151** is highly productive (Elite Bronze, 104/13 calves, an embryo donor and is in calf again with her 14th calf.) Lot 18, a heavy bull with capacity, width and is extremely broad. A short thickset bull and similar to his brother Lot 10, he is short on the leg with a heavy body, a quality coat, excellent testes and tight sheath. His sire **LAR17-081**, a dark smooth quality grand son of well known Herd sire **LAR07-55**. The dam of **LAR17-081**, **LAR13-068** is a fantastic Elite Gold cow still in the herd, with perfect, feminine conformation and udder 109/6 calves, 380 ICP. We have used 2 of her sons in the herd and she has just weaned very promising bull calf. Lot 18 has a reputable combination of dam lines on both sides with his dam **LAR05-151** going back to the very impressive bull **LAR99-350** who bred exceptional females and on the sire side we have **BP10-017**, the Peter Knott bull who was extremely successful in the Up George herd breeding some of the best cows in the herd. Lot 18 was used in the herd in a multiple sire group and we keep a semen share in the bull.



Calving Ease Value 82	Weaner Calf Value 102	Fertility Value 110	Cow Value 101	Growth Value 94	Birth Mass 33kg Wean Mass 220kg Length 1230 Height 1050 L/H Ratio 1.17
--------------------------	--------------------------	------------------------	------------------	--------------------	---

**Lot 19. LAR20-242.** A 4 star son of LAR17-339 who has bred exceptionally well in the Up George herd. Lot 19 true to type, with capacity, depth and a good top line, is out of an extremely well connected bloodline. His dam LAR14-51, still in the herd (102/5, ICP 373) is a beautiful result of the tried and tested combination of 2 of the most successful sires used at Up George, LAR07-55 and LAR06-224. Lot 19 is a short thickset well balanced bull in conformation with exceptional milk and growth in his genetic history. With a Weaner Calf value of 147, Post wean value of 142 this bull will breed exceptional and adaptable weaners with growth and the ability to finish economically in the feedlot. These animals with a heavy mature weight and low on height are the adaptable and functionally efficient sort after animals for all conditions. A well balanced bull with a stable historic genetic background and sound estimated breeding values.



Calving Ease Value 79	Weaner Calf Value 139	Fertility Value 96	Cow Value 116	Growth Value 123	Birth Mass 37kg Wean Mass 240kg Length 1390 Height 1130 L/H Ratio 1.23
--------------------------	--------------------------	-----------------------	------------------	---------------------	---

**Lot 20. LAR20-195.** A very hardy and tough looking 4 star son of **LAR16-470** (son of **BG12-43**) with 6 sons on sale. This herd sire **LAR16-470** bred exceptionally well. He was used to open heifers with light calves, average birth mass of 31 kgs, and with excellent performance in his calves, good wean weights with high post wean and growth. These type of cattle are economically viable under all environmental circumstance, they are adaptable, fertile and functionally efficient. This Lot 20 is exactly the type of animal we strive to breed, average on birth mass with a high wean weight and exceptional growth and a medium frame. They are sort after with the ever demanding selection pressures genomically as well as phenotypically. Lot 20, a well balanced masculine bull with width, strong topline and a well developed hindquarter. A dark attractive coat with a good head. An all rounder bull who will have a positive impression in any herd.



Calving Ease Value 100	Weaner Calf Value 118	Fertility Value 105	Cow Value 114	Growth Value 132	Birth Mass 31kg Wean Mass 239kg Length 1410 Height 1140 L/H Ratio 1.24
---------------------------	--------------------------	------------------------	------------------	---------------------	---

**Lot 22. LAR20-520.** A dark attractive 4.5 star bull with a good disposition and an extremely attractive and proven genetic background. He is one of the youngest bulls on sale and the first bull to attract attention in the group with his beautiful masculine head, excellent capacity and beefing qualities. His sire **LAR18-018** (**LAR14-173** son) has 7 sons on sale and has bred extremely well fleshed attractive cattle with performance. **LAR18-18** has some of the best young bulls on sale this year, all a perfect type with capacity, beef and performance. They adapt easily and did exceptionally well on D phase as one of the top sire performers in the group. We are very satisfied how the sons of **LAR14-173** have bred in general, all prepotent and breed true to type with little variation. **LAR18-18** was bought by Leon Riekert and Andries Kruger in 2021. Lot 22's dam **LAR09-231** (108/9, ICP 368, Elite Gold, 5 star, 9 Score and 100% retention) is one of the most beautiful cows at Up George with capacity, depth and feminine and has bred 2 herd sires so far, **LAR12-026** and **LAR16-453**. Both sires bought by Boeram Venter, and have bred extremely well with **LAR16-453** having 6 top sons on sale this year including Lot 1. Lot 22 a stylish young bull, high on milk, wean and growth with an exceptional carcass value.



Calving Ease Value 83	Weaner Calf Value 131	Fertility Value 112	Cow Value 125	Growth Value 134	Birth Mass 35kg Wean Mass 222kg Length 1300 Height 1030 L/H Ratio 1.26
--------------------------	--------------------------	------------------------	------------------	---------------------	---

**Lot 24. LAR20-441.** Another exceptional son of LAR16-453 (Lot 6 in 2020 bought by Boeram Venter) See Lot 1. He has an exceptional masculine head with attractive dark points, very broad and well fleshed. A tough hardy bull with good libido, who we used in the 2022 mating season and look forward to his progeny in 2023. His dam LAR11-266, always breeds one of the top weaners each year with the right conformation, broad and with capacity. Her sister (same dam) **LAR08-320**, Elite Gold cow, bought by Leon Riekert, a beautiful functional cow who is still in the LFR Bonsmara Stud herd. Her dam **LAR99-244** was a fantastic, functionally efficient old cow who produced exceptional daughters. When selecting bulls to use in the herd it is imperative that the dam line is significant and is proven. This leads to a better chance of a breeding the all important maternal breeding herd.



Calving Ease Value 90	Weaner Calf Value 104	Fertility Value 97	Cow Value 100	Growth Value 111	Birth Mass 38kg Wean Mass 266kg Length - Height - L/H Ratio -
--------------------------	--------------------------	-----------------------	------------------	---------------------	--

**Lot 26. LAR20-498.** This bull deserves a special mention as he has a combination of two of the most special Up George cows in his pedigree, **LAR10-159** (dam of **LAR14-173**, **LAR17-358**, **LAR19-319**) and **LAR02-180** (Elite Gold, 5 star, who is still alive at 21 years old! We have used 6 of her sons in the herd including **LAR06-224**, **LAR07-234**, **LAR08-218**) The dam of Lot 26 **LAR11-364** (102-6. ICP 384) is now with Ruben Essakow. The sire of Lot 26, **LAR16-468** is a son of **LAR10-159**, a dark smooth and very attractive compact bull who was unfortunately injured before we could utilise him to his full capacity or obtain semen from him. Lot 26, a very correct, masculine bull with a good head, short thickset type, medium framed bull with an exceptional pedigree.



Calving Ease Value 99	Weaner Calf Value 113	Fertility Value 99	Cow Value 106	Growth Value 107	Birth Mass 34kg Wean Mass 224kg Length 1310 Height 1100 L/H Ratio 1.19
--------------------------	--------------------------	-----------------------	------------------	---------------------	---