



Lot 1. LAR19-144. As history would have it we will kick off the 2022 auction with a top quality bull. Lot 1 with his attractive dark smooth coat, beautiful masculine head and the characteristic of his grandfather LAR06-224 with his exceptional capacity, depth and width. His dam **LAR16-034** (110/3 calves, ICP385) a beautiful dark feminine A frame daughter of **LAR06-224**, comes out of a very high milk producing, fertile family with exceptionally good weaner value traits, and with high scoring conformation traits of 8+ for all her progeny so far. Lot 1 has a proven genetic history of sustainable cow values, milk, fertility and production values. We have used Lot 1 in a group of first calvers and look forward to his progeny bringing in the dominant characteristics of his proven genetic background.



Lot 1's sire, **LAR16-053** was also Lot 1 in 2019, bought by Arthur De Villiers, and has 5 son's on sale this year. His sire **SYF13-117**, a beautiful dark smooth long bull who was well used in many herds in SA. We retain a semen share in this Lot 1.

| | | | | | |
|--------------------------|--------------------------|-----------------------|------------------|---------------------|---|
| Calving Ease Value 80 | Weaner Calf Value 115 | Fertility Value 93 | Cow Value 100 | Growth Value 119 | Birth Mass 34kg Wean Mass 280kg Height 1170 Length 1420 L/H Ratio 1:21 |
|--------------------------|--------------------------|-----------------------|------------------|---------------------|---|



Lot 2. LAR19-173. This bull is exceptionally well bred on both sire and dam sides. He is a striking son of **LAR15-290**, with a strong masculine head, good "houding" and presence and always catches the eye, with his dark quality coat. A bull with balance, a strong top line, broad over the shoulder with good length and capacity. Lot 2's sire **LAR15-290**, (Lot 10 in 2019) sold to Boeram Venter, has bred exceptionally well, both bulls and remarkable females with two of his daughters being sold for record prices at the National Sale in 2022 to Andre van der Heyde, Boshhoek Bonsmaras. LAR15-290 is an exceptional herd sire whos 'sire is **LAR11-071** (a well used son of **LAR06-224** originally bought by Louis Myburg in 2015), and his dam **LAR06-419** (still with Sebadja Bonsmaras) A beautiful cow with capacity and volume. 98/11 calves, ICP 379 days and her dam **LAR96-212** 101/11 calves, a functional cow with excellent milk and fertility. Lot 2 has a beautiful looking feminine dam, **LAR14-266** who scores 8.5, and is out of a female line with excellent milk. This dam LAR14-266 sire is the very popular bull **LAR10-181** who has bred some of the best females in the Up George herd with his width and exceptional capacity coming through in his daughters. LAR10-181 is a son of **LAR08-54** who also bred the dam of legendary **LAR14-173**. (See Lot 8) and LAR10-181 is a brother (same dam) to the Elite Gold cow **LAR08-226** on sale this year and she is also the dam of Lot 4. The depth of pedigree in this Lot 2 is remarkable and lends itself towards the predictability of genetic sustainability.



| | | | | | |
|---------------------------|--------------------------|-----------------------|------------------|---------------------|---|
| Calving Ease Value 103 | Weaner Calf Value 106 | Fertility Value 97 | Cow Value 100 | Growth Value 102 | Birth Mass 33kg Wean Mass 239kg Height 1167 Length 1394 L/H Ratio 1:19 |
|---------------------------|--------------------------|-----------------------|------------------|---------------------|---|



Lot 3. LAR19-058. This is a very well balanced 4 star son of **CEF13-317**. A very attractive and correct bull with a quality coat, good head and skof. A masculine bull with good libido, well formed testes measuring 42cm, a tidy underline and a bull with excellent length and width. CEF13-317 has bred exceptionally well in the Up George herd with well adapted offspring who are very well fleshed and have the desired capacity and growth in length and width. The right size and type for any conditions. These sons are definitely in the right category for breeding heavy weaners with performance and sustainability for feedlot conditions requiring minimal backgrounding. Economical and profitable cattle. Weaner Calf value of 119 (wean mass of 290kg) as well as the all important wean direct value index, of 126(indicating milk and calf growth) and post wean index of 136 indicating adaptability under any circumstances. For economical sustainability it is imperative for a weaner calf to adapt post wean to all conditions whether it be feedlot, growth and maturity for replacement females and bulls. Lot 3 is no exception and comes out of a well connected family on his dam side with his dam **LAR16-347** (milk selection value of 105, fertility 111) a beautiful feminine daughter of **LAR13-032** (Boeram Venter) who is a half brother to **Lot 8 LAR17-358** and **Maestro LAR14-173**, who all have the same dam **LAR10-159** (See Lot 8) Lot 3 is a very promising bull with exceptional qualities in both conformation, breeding and well balanced EBV's. Lot 3 a bull who is DM gene free has been used to open heifers. We retain a semen share in this bull.



| | | | | | |
|---------------------------|--------------------------|------------------------|------------------|---------------------|---|
| Calving Ease Value 113 | Weaner Calf Value 117 | Fertility Value 105 | Cow Value 114 | Growth Value 126 | Birth Mass 33kg Wean Mass 290kg Height 1160 Length 1410 L/H Ratio 1:22 |
|---------------------------|--------------------------|------------------------|------------------|---------------------|---|



Lot 4. LAR19-013. This attractive son of **LAR14-446** is packed with beef and has incredible volume. Extremely well fleshed bull with a good top line, tight sheath and big well formed testes, 43cm, and strong masculine traits. His sire **LAR14-446** (now with Johan Goosen) was his mother **LAR95-50's** last calf at 19 years old! (111/15 calves) She was a stalwart cow in the Up George Herd and is also the dam of 20 year old cow **LAR02-180** who is still in the herd. (108/15 calves) LAR14-446's sire is **LAR12-26** (Boeram Venter) a well bred herd sire in his own right with the legendary sire of **LAR07-55**. Lot 13 has an extremely well connected pedigree on both sire and dam side, with depth and history going back a few generations. Lot 4's dam **LAR08-226**, Elite Gold, 5 star cow (on sale at Lot 85, Lot 2) **LAR08-226** an incredible cow who has bred extremely well with 4 daughters in the herd, 105/11 calves, ICP 384 days. Her dam **LAR01-433** 101/13 calves 384 ICP, also the dam of herd sire **LAR10-181** (see Lot 2) With this sustainable extended pedigree, we expect Lot 4 to breed exceptional females with milk, fertility and longevity. Lot 4, a heavy winter-calf weaner at 280kg, high on wean direct and calf growth, (weaner calf value 136. wean direct 132, wean maternal 113) could easily make a difference in productivity in a herd striving to breed heavy weaners as well as efficient replacement heifers with milk.



| | | | | | |
|--------------------------|--------------------------|------------------------|------------------|---------------------|---------------------------------|
| Calving Ease Value 90 | Weaner Calf Value 135 | Fertility Value 103 | Cow Value 125 | Growth Value 129 | Birth Mass 39kg Wean Mass 280kg |
|--------------------------|--------------------------|------------------------|------------------|---------------------|---------------------------------|



Lot 5. LAR19-294. A masculine, easy fleshing type of bull with a good head, broad over the shoulders & back, has a well fleshed hind quarter with a good neat sheath & scrotum.(41 cm) He is a son of the impressive herd sire **LAR16-093** (Sebadja Bonsmaras) who's dam **LAR13-49**, one of the most spectacular looking cows. A dark ruby red cow, a daughter of **BP10-17** who has bred some of the most beautiful feminine daughters in the herd with an abundance of milk. This prepotent sire **LAR16-093** has 8 sons on sale who all have the same easy fleshing tendencies with capacity & width. Lot 5's dam **LAR14-35**, a daughter of **LAR07-55**, with above average milk & fertility (102/4, 388 ICP) who's grand mother **LAR04-278**, (Trenmore Bonsmaras, Corli van Rooyen) with her 13th calf. A very productive old cow 105/12 calves. Lot 5 has above average expected breeding values, a heavy bull with correct conformation, good on milk & post wean, did well on D-phase with 115 index. This bull, an allrounder who does not carry the DM gene.



| | | | | | |
|--------------------------|--------------------------|------------------------|------------------|---------------------|---|
| Calving Ease Value 92 | Weaner Calf Value 110 | Fertility Value 111 | Cow Value 111 | Growth Value 106 | Birth Mass 34kg Wean Mass 220kg Height 1090 Length 1350 L/H Ratio 1:24 |
|--------------------------|--------------------------|------------------------|------------------|---------------------|---|



Lot 6. LAR19-329. An impressive 4 star, compact bull with a lot of qualities to like with his quality coat, capacity, shoulder width, masculine head & broad muzzle with dark points. An impressive son of the good looking & well used bull **LAR15-290** (Lot 10 in 2019 bought by Boeram Venter) See Lot 2. This herd sire **LAR15-290** has really bred exceptional quality cattle, both bulls & females. His pedigree is quite special, & he certainly lives up to his genetic potential phenotypically and genotypically. It is not surprising with a dam line on both sire & dam side including stalwart cows **LAR02-180** (108/15 calves) **LAR08-188** (**LAR04-287** daughter, 106/8 calves) **LAR96-212** (101/11 calves) **LAR06-419** (98/11 calves) This is true genetic sustainability & predictability at its best. The list of inherent characteristics goes on and on which lends itself to exciting predictable genetics!! Lot 6's dam LAR13-214 also bred



Lot 1 in 2020, **LAR17-060** bought by Jan Meyer. A dam with a good ancestry & a grand daughter of legendary **LAR07-90**. Lot 6 is low on birth (25kg birth mass) & ease of calving,(calving ease value 129) recommended to open heifers & has the backing of an exceptional female line up. A bull with an exciting future ahead of him with a justifiable pedigree & estimated breeding values to back him.

| | | | | | |
|---------------------------|--------------------------|------------------------|------------------|--------------------|---|
| Calving Ease Value 132 | Weaner Calf Value 196 | Fertility Value 112 | Cow Value 112 | Growth Value 95 | Birth Mass 25kg Wean Mass 220kg Height 1080 Length 1350 L/H Ratio 1:24 |
|---------------------------|--------------------------|------------------------|------------------|--------------------|---|



Lot 7. LAR19-442. This son of **AG15-738** is a block of beef! A very good head, deep, fleshy body with the desired width, a good top line with a neat tail setting. A lot to like about this attractive son of AG15-738 who has 8 sons on sale. AG15-738 has bred well in the Up George herd with a high retention rate. AG15-738, a dark bull with a very good masculine head with proven genes in his background with his sire **AG09-751** (well used by Arthur De Villiers & Paul Mare as well as a semen donor) paternal grandsire CEF04-431, a very dark attractive masculine bull with exceptional character traits in width & length. The depth of pedigree on AG15-738 dam line is sought after with the likes of predecessors **AGN4, AGK66, AGJ8, AGD103, AGH1**. The foundation genetics of the popular AG herd. Lot 7 has a good combination of genetics with his dam LAR16-384 being a daughter of **LAR12-455**, a bull with capacity &



depth & bred excellent females. Lot 7 has the same combination of genetics on his dam & sire side as Lot 21.

| | | | | | |
|---------------------------|--------------------------|-----------------------|-----------------|---------------------|---|
| Calving Ease Value 101 | Weaner Calf Value 109 | Fertility Value 85 | Cow Value 95 | Growth Value 114 | Birth Mass 33kg Wean Mass 235kg Height 1080 Length 1300 L/H Ratio 1:20 |
|---------------------------|--------------------------|-----------------------|-----------------|---------------------|---|

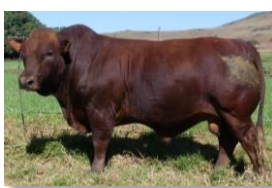


Lot 8. LAR17-358. It certainly is a privilege to have the opportunity to infuse genetics of such calibre of this bull **Lot 8**, into the Up George Herd. The genetic sustainability of Lot 8's dam **LAR10-159** has had an enormous influence on the progeny of Lot 8. His dam **LAR10-159**, an Elite-Gold 5 star cow, visual score of 9/9 & an all important 100% retention rate for all 9 calves so far. All 5 bull of her bull calves have been used in the herd. Most importantly the proven bulls being **Lot 8, LAR17-358, Maestro LAR14-173** who needs no introduction and **LAR13-032** (Boeram Venter) All 3 of these herd sires have added extraordinary genetic value to numerous herds in SA. This dam of Lot 8, **LAR10-159** (106/9 calves ICP 380) is out of a high milk producing, fertile family with an outstanding dam **LAR02-268**, 104/13 calves ICP 376 & grand dam **LAR05-189**, 102/7 calves. Lot 8's sire **JRP11-073**, a bull bought from JJ Park (Kingspark



Bonsmaras) who is bred out of LAR bloodlines with excessive width & correct conformation going back to the grandmother **LAR98-333** who is a sister, same dam, to the legendary 20 year old cow **LAR95-050**. (See Lot 4) **JRP11-73** a dark robust thickset bull with capacity, good masculine traits with an outstanding broad topline. He was used very successfully to open heifers for 2 seasons, as well as on cows & bred the notable herd sire **LAR15-282**. (bought by Laurence Allem in 2018.) **Lot 8** is a prepotent sire who certainly stamps his progeny & has reset the benchmark with remarkable qualities of width, capacity, balance & uniformity in his offspring both males & females. These calves of **LAR17-358** are consistently at the top end on performance & conformation, they are in a class of their own no matter the age group & have proven to be high performing, early maturing cattle with growth in the right place, in length, width & volume. They are heavy weaners & have proved to continue to adapt, thrive & perform under all conditions. These adaptability traits are of economical importance for genetic improvement & playing an important role in climate change adaption. Physical characteristics remain important & visual evaluation is still a key part of the selection. **Lot 8**, a thick, heavy bull with remarkable capacity & volume (**L/H ratio of 1:27**) full behind the shoulder with a very strong top line, a neat tail setting and a very tidy underline with a tight sheath. He is well-muscled, well fleshed & does not carry the double muscled gene. We recommend this bull to open heifers (**Calving ease value 124**) as we have used him to open heifers successfully for 2 seasons, as well as on top cows. He has 65 progeny so far with an average birth mass of 31kgs on heifers and cows. Lot 8's calves are low on birth & have an incredible ability to grow, perform & mature from a very early age & continue this growth pattern into maturity. This is indicative of the old term of a "curve bender". We have strategically used **Lot 8 LAR17-358** on his half brother **LAR14-173's** daughters very successfully. This was to line breed back to their remarkable dam LAR10-159 to lock in her spectacular desirable traits. A good example of this exercise is the cow **LAR17-300**, a daughter of **LAR14-173** who is on sale this year with her **Lot 8, LAR17-358** heifer calf **LAR22-022**. See. We retain a semen share & 3 co-ownerships have been taken in this **Lot 8, LAR17-358**.

| | | | | | |
|---------------------------|--------------------------|------------------------|------------------|---------------------|---|
| Calving Ease Value 123 | Weaner Calf Value 118 | Fertility Value 112 | Cow Value 122 | Growth Value 106 | Birth Mass 30kg Wean Mass 256kg Height 1090 Length 1380 L/H Ratio 1:27 |
|---------------------------|--------------------------|------------------------|------------------|---------------------|---|



Lot 9. LAR19-410. A dark sleek masculine son of LAR14-106 (Lot 6 in 2019, sold to Andre van der Heyde and Jean Gouws and has 8 sons on sale) with an extremely strong attractive head, broad over the shoulders with a strong top line which is very characteristic of his sire. Well fleshed broad hind quarter and big well formed testes, 40cm. Lot 9 has an incredible depth of proven genetic history. His grand dam LAR02-81 was an incredible cow with an excellent track record. Lot 9's dam LAR13-253, still in the herd, is one of LAR02-81's 4 daughters who are still in the herd, including LAR10-194, one of the best looking cows at Up George and the dam of Lot 10. Another prominent daughter is LAR09-231 still in the herd, and dam of LAR16-453 (Boeram Venter) LAR02-81 has produced 5 sons for Production sales over the years. Lot 9's dam line are a line up of good looking productive cattle as well as his dam



LAR13-253 who's sire was LAR09-349, one of the legendary sire LAR04-287's best looking sons. Lot 9 a good looking bull himself is backed with above average EBV's and is an all round attractive package.

| | | | | | |
|---------------------------|--------------------------|------------------------|------------------|---------------------|---|
| Calving Ease Value 106 | Weaner Calf Value 107 | Fertility Value 110 | Cow Value 112 | Growth Value 107 | Birth Mass 30kg Wean Mass 256kg Height 1090 Length 1380 L/H Ratio 1:27 |
|---------------------------|--------------------------|------------------------|------------------|---------------------|---|



Lot 10. LAR19-374. A striking 4.5 star son of LAR17-263 who was the first LAR14-173 son sold on auction as a 2 year old bull in 2019 to Dr Kotie and Theresa Pienaar. The bull bred extremely well in their herd and this Lot 10 is testament to the quality he breeds. With 2 exceptional dam lines in this herd sire LAR17-263's makeup, namely LAR10-159, 106/9 calves and 100% retention (See Lot 8) and LAR11-082 (109/7, 362 ICP) who has bred 8 bull calves with a 100% retention rate. Lot 10 a broad, compact heavy bull carrying an enormous amount of beef with capacity, length and depth, with a well balanced ratio of muscling to flesh. This lot 10 is an example of the desirable correlation between height and growth. Low on height with a high Growth value, good performance indexes on D phase, 106 and post wean 114 which is a good indication of the right size right type of bull who has the growth factor in length,



width and volume as opposed to height, who will easily adapt to most conditions. Other than this Lot 10's almost perfect conformation traits, he is impeccably bred. His dam LAR10-194 is probably one of the most beautiful and most photographed cow at Up George with a proven genetic track record with her dam LAR02-81 (102/13 calves) having 7 daughters in the Up George herd including the dam of Lot 9. The sire of this icon grandmother is LAR99-144, who is a son of the legendary VV96-318 and the 20 year old cow LAR95-50. (111/15 calves)The depth of pedigree on both sire and dam side in this Lot 10 is truly phenomenal. We retain a semen share in this bull.

| | | | | | |
|---------------------------|--------------------------|------------------------|------------------|---------------------|---|
| Calving Ease Value 100 | Weaner Calf Value 118 | Fertility Value 106 | Cow Value 117 | Growth Value 116 | Birth Mass 33kg Wean Mass 220kg Height 1070 Length 1310 L/H Ratio 1:22 |
|---------------------------|--------------------------|------------------------|------------------|---------------------|---|



Lot 11. LAR19-431. This son of LAR14-106 (Andre van der Heyde & Jean Gouws, 7 sons on sale) is an exceptionally broad, long bull with the characteristic strong top line of his sire. There is a lot of milk & iconic bloodlines in this bull's genetic history. This lot 11 will fit comfortably into any breeding program striving for increased weaner weights as well as replacement heifers with milk. There is a proven history & an attractive combination of genetics in this bull, with LAR14-106 going back to his grandmother LAR08-256, a sister, same dam to the herd sire LAR07-55, & is on sale this year as an elite golden oldie. Then on the dam side there are 2 stalwart cows, LAR02-226 who is the dam of herd sire LAR10-416 (Piet du Toit and Excelcus Trust) & is the brother of the bull who bred so well LAR05-067. The grand Dam LAR02-41 was a remarkable AGJ8 daughter in the herd. Lot 11's dam LAR13-302 (Elite-Bronze) is still in the herd (114/5 calves, 374 ICP)



| | | | | | |
|--------------------------|--------------------------|------------------------|------------------|---------------------|---|
| Calving Ease Value 99 | Weaner Calf Value 126 | Fertility Value 105 | Cow Value 119 | Growth Value 131 | Birth Mass 36kg Wean Mass 250kg Height 1110 Length 1350 L/H Ratio 1:22 |
|--------------------------|--------------------------|------------------------|------------------|---------------------|---|



Lot 12. LAR19-445. A very dark attractive bull with black points, very strong masculine head, a very long bull with an exceptional broad top line, big well formed testes measuring 41cm and a tight sheath. Lot 12's sire LAR16-080, a very sleek dark smooth bull who is a son of LAR12-455 who bred exceptionally fleshy cattle with a high retention. LAR16-080 has bred well in the herd, with numerous top lots on this sale this year including Lots 12, 13, 16, 18, and 25. Lot 12's dam is a very good looking daughter of ADV10-321 who is on this years auction, and her dam LAR12-034 is a very good looking daughter of LAR07-55 who is also still in the herd with her 8th calf and has 6 daughters in the herd. This bull Lot 12 was one of the top weaners in 2020 and showed promise from a very young age. His brother LAR18-82 from the same dam was used in the stud in 2020 with great results.



| | | | | | |
|--------------------------|--------------------------|-----------------------|-----------------|---------------------|---|
| Calving Ease Value 89 | Weaner Calf Value 108 | Fertility Value 93 | Cow Value 97 | Growth Value 104 | Birth Mass 34kg Wean Mass 222kg Height 1080 Length 1310 L/H Ratio 1:21 |
|--------------------------|--------------------------|-----------------------|-----------------|---------------------|---|



Lot 14. LAR19-330. This compact 4 star bull is packed with beef and is tough and hardy type with a very good head and a strong broad muzzle. A bull with very correct conformation, broad hind quarter and strong behind the shoulders with a good top line. A bull with a light birth mass of 23kg and good growth which is the ideal. Lot 14's sire LAR16-225 a bull used to open heifers very successfully. A quality long bull with a good head bought by Mark and Angie Arbuthnot from Rosetta. This Lot 14 has an incredible grand mother. We often find that most bulls tend to breed back to their grand mothers on the dam side. This grandmother LAR02-230 (98/11 calves, LAR02-230 385 ICP) is the dam of LAR11-82 who bred the influential son of LAR14-173, LAR17-263 who is the sire of Lot 10. (See Lot 10)



| | | | | | |
|---------------------------|-------------------------|------------------------|------------------|---------------------|---|
| Calving Ease Value 126 | Weaner Calf Value 96 | Fertility Value 105 | Cow Value 105 | Growth Value 102 | Birth Mass 23kg Wean Mass 237kg Height 1110 Length 1370 L/H Ratio 1:21 |
|---------------------------|-------------------------|------------------------|------------------|---------------------|---|



Lot 16. LAR19-170. A masculine, easy fleshing type of bull with a good head, broad over the shoulders and back, and has a well fleshed broad hind quarter with a good neat sheath & scrotum.(44 cm) He is one of the first bulls to catch the eye with a good hounding. He is a son of LAR16-080 (6 sons on sale) with a very beautiful broad thickset dam LAR15-111 (100% calf retention) who is a daughter of LAR12-26 (Boeram Venter) She is the sister,(same dam LAR08-188, Sebadja Bonsmaras, a daughter of LAR04-287), of well used herd sire LAR11-71.(Bought by Louis Myburg & Poggenpoel Bonsmaras) Lot 16, a very good looking bull with a well connected pedigree and excellent EBV's, excellent weaner calf value of 129 & Growth value of 130, this bull should breed phenomenal weaners as well as excellent replacement females. A good all rounder.



| | | | | | |
|--------------------------|--------------------------|------------------------|------------------|---------------------|---|
| Calving Ease Value 78 | Weaner Calf Value 127 | Fertility Value 109 | Cow Value 117 | Growth Value 127 | Birth Mass 42kg Wean Mass 275kg Height 1160 Length 1400 L/H Ratio 1:21 |
|--------------------------|--------------------------|------------------------|------------------|---------------------|---|



Lot 18. LAR19-195. An attractive grandson of LAR12-455 on the sire side and out of a proven dam line. Lot 18's dam LAR15-045, (100% calf retention) a very broad good looking daughter of ADV10-321 who has bred very good females in the herd. This dam LAR15-045 is a sister to Lot 2, 2021 auction, LAR18-306 (Bestrina Bonsmaras) The dam of LAR15-045 is LAR12-076 (a beautiful quality daughter of LAR07-55, 100 % retention for 7 calves, 107/6, ICP 397) and has bred 4 exceptional daughters in the herd. The dam of LAR12-076 is LAR09-236, a beautiful dark sleek cow sold on 2021 auction to Elloff and Stephen Muller. She is a sister to LAR10-159 who is the dam of Lot 8, LAR17-358 and Maestro LAR14-173. This Lot 18 has proven history in his dam line and should breed exceptional replacement heifers. A bull low on height but has good wean, post wean and growth values. A good all rounder.



| | | | | | |
|--------------------------|--------------------------|-----------------------|------------------|---------------------|---|
| Calving Ease Value 82 | Weaner Calf Value 116 | Fertility Value 98 | Cow Value 103 | Growth Value 117 | Birth Mass 35kg Wean Mass 260kg Height 1130 Length 1410 L/H Ratio 1:25 |
|--------------------------|--------------------------|-----------------------|------------------|---------------------|---|

Lot 21. LAR19-268. One of the favourite AG15-738 sons on sale. (See Lot 7) A very dark attractive bull carries himself well, has an exceptional head, dark points with a strong muzzle. One of the characteristic we like to select for. This AG15-738 herd sire has bred exceptional broad strong masculine heads. Lot 21, a very correct bull, broad over the shoulders, has length and width with a good underline and testes (39.5cm) Lot 21's grand mother is the legendary Elite Gold cow LAR10-49 (107/8 calves, ICP 384) who was the dam of 2 of the top price bulls on the 2021 auction, Lot 6, LAR17-417 (Bonro Bonsmaras) and Lot 16, LAR18-448 (Louis Myburg). The dam of this grand mother LAR10-49 is a Elite Silver merit cow, LAR07-186 (101/8) and her sire is LAR06-224. She is still in the herd.



| | | | | | |
|--------------------------|-------------------------|-----------------------|-----------------|--------------------|---|
| Calving Ease Value 96 | Weaner Calf Value 98 | Fertility Value 89 | Cow Value 90 | Growth Value 98 | Birth Mass 32kg Wean Mass 230kg Height 1050 Length 1310 L/H Ratio 1:25 |
|--------------------------|-------------------------|-----------------------|-----------------|--------------------|---|

Lot 22. LAR19-430. A very dark attractive 4.5 star son of LAR16-093 (Sebadja Bonsmaras, top price bull in 2019) who has 8 sons on sale. A bull who has bred well in the Up George and Sebadja herds, with his capacity and width coming through strongly in his offspring. This herd sire LAR16-93 has a spectacular looking dam LAR13-49. A very dark feminine cow who always breeds one of the best weaners each year. We see a lot of her characteristics in the progeny of LAR16-93. We have used this Lot 22 in the stud herd hoping to bring through these characteristics as well the abundance of milk from both dam lines. Lot 22's dam, a very neat beautiful A frame cow with a lot of milk (108/5, 385 ICP) and her dam LAR05-157 (103/8 calves) an Elite-Bronze cow who is a grand daughter of AGJ8.



| | | | | | |
|--------------------------|--------------------------|------------------------|------------------|---------------------|---|
| Calving Ease Value 99 | Weaner Calf Value 109 | Fertility Value 105 | Cow Value 110 | Growth Value 107 | Birth Mass 35kg Wean Mass 220kg Height 1050 Length 1290 L/H Ratio 1:23 |
|--------------------------|--------------------------|------------------------|------------------|---------------------|---|

Lot 23. LAR19-214. A quality bull with a dark smooth coat, with a very good broad head. A solid broad bull with excellent length. This predominant characteristic of width comes through from his maternal grand father JRP11-073 who is also the sire of Lot 8, LAR17-358. The dam of Lot 23, LAR14-203, a beautiful feminine eye catching cow with a beautiful head and dark points, and with an excessive amount of milk (110/4 calves, 373 ICP) who always produces one of the heaviest weaners every season with Lot 23 's actual wean weight of 290kg. The dam of this cow is LAR09-231 (grand dam of Lot 23) has produced 2 top herd sires, including LAR12-026 (Boeram Venter) and LAR16-453 (Boeram Venter) Both these two bulls have been used in the Up George herd as well..



| | | | | | |
|---------------------------|--------------------------|------------------------|------------------|---------------------|---|
| Calving Ease Value 105 | Weaner Calf Value 121 | Fertility Value 114 | Cow Value 123 | Growth Value 113 | Birth Mass 31kg Wean Mass 290kg Height 1150 Length 1450 L/H Ratio 1:26 |
|---------------------------|--------------------------|------------------------|------------------|---------------------|---|

Lot 24. LAR19-008. A quality bull with a proven combination of genetics, with LAR16-93 (Sebadja Bonsmaras, see Lot 5) as his sire combined with the proven lines of LAR06-224 & LAR07-55 on the dam side. These are a combination of dominant genes from proven old cows who are all still in the herd, such as LAR13-49, a beautiful top cow in the herd & dam of LAR16-93 (see Lot 5), LAR07-198, (101/12 calves), still in the herd with her 12th calf as well as 5 of her daughters, & LAR02-180 (108/15 calves) who is also still in the herd at 20 years old, with 5 of her sons used in the herd including LAR06-224. With his outstanding pedigree, we used Lot 24 in the stud herd. He is light on birth mass, 27kgs and has a good calf and post wean growth, 121 index, and good on milk, 112 index.



| | | | | | |
|--------------------------|--------------------------|------------------------|------------------|---------------------|---------------------------------|
| Calving Ease Value 99 | Weaner Calf Value 118 | Fertility Value 109 | Cow Value 118 | Growth Value 118 | Birth Mass 27kg Wean Mass 230kg |
|--------------------------|--------------------------|------------------------|------------------|---------------------|---------------------------------|

Lot 26. LAR19-004. A heavy well fleshed 4 star bull with capacity, very good coat and a strong masculine head. His dam LAR09-342 is one of the most beautiful LAR06-224 daughters around. She was one of the top price cows sold on the Up George auction in 2021 to Eloff and Stephen Muller. (Tambaraine Bonsmaras) Lot 26's sire is LFR15-032 (Leon Riekert.) a proven herd sire was used extensively in the Up George herd with 58 progeny and produced some of the top bulls on auction in 2021. A bull with superb Bosveld genetics linked well in the Up George herd also producing outstanding feminine females with beautiful heads and capacity, and cows with good udders and milk. We have used Lot 26 in the stud herd hoping to breed some top females and to continue this outstanding line.



| | | | | | |
|---------------------------|--------------------------|------------------------|------------------|---------------------|---------------------------------|
| Calving Ease Value 100 | Weaner Calf Value 121 | Fertility Value 107 | Cow Value 119 | Growth Value 116 | Birth Mass 36kg Wean Mass 290kg |
|---------------------------|--------------------------|------------------------|------------------|---------------------|---------------------------------|

Lot 27. LAR19-338. A dark coated, heavy bull with width and incredible capacity which is one of the strong characteristics coming from his very impressive and prepotent sire LAR16-93 (Sebadja Bonsmaras) There are strong characteristics coming through in this herd sire's progeny, from his top dam LAR13-49. (102/6, 375 ICP) She is one of the most beautiful and productive cows in the herd. A dark smooth cherry red A framed cow with dark points and a beautiful feminine head who scores a 9. She breeds one of the top weaners each year. A truly valuable cow in the Up George herd. Lot 27's dam LAR13-478 (Essakov Bonsmaras) is a daughter of LAR07-55 who adds value to this Lot 27's genetic profile. A fantastic combination of proven genetics.



| | | | | | |
|---------------------------|--------------------------|------------------------|------------------|--------------------|---|
| Calving Ease Value 100 | Weaner Calf Value 117 | Fertility Value 104 | Cow Value 113 | Growth Value 99 | Birth Mass 32kg Wean Mass 250kg Height 1100 Length 1360 L/H Ratio 1:24 |
|---------------------------|--------------------------|------------------------|------------------|--------------------|---|

Lot 28. LAR18-349. A very attractive dark bull who is a son of the popular herd sire LAR15-282, (bought by Laurence Allem in 2018) and who is a son of JRP11-73 (sire of Lot 8) One of the longest (1:27 ratio) and broadest bulls on sale with a strong head, attractive dark pigment. He has large, well formed testes measuring 41cm, which are unfortunately slightly twisted. Lot 28's dam LAR13-248, is a beautiful LAR07-55 daughter who breeds exceptionally well with high scoring calves, and she is a daughter of LAR04-209 (98/14 calves) who is still in the herd at 18 years old and is also the grandmother of LAR17-292 (LAR14-173 son.) This Lot 28 is well bred out of a productive, fertile family on both sides with high conformation scores.



| | | | | | |
|--------------------------|--------------------------|------------------------|------------------|---------------------|---|
| Calving Ease Value 81 | Weaner Calf Value 114 | Fertility Value 100 | Cow Value 103 | Growth Value 107 | Birth Mass 41kg Wean Mass 260kg Height 1080 Length 1370 L/H Ratio 1:27 |
|--------------------------|--------------------------|------------------------|------------------|---------------------|---|